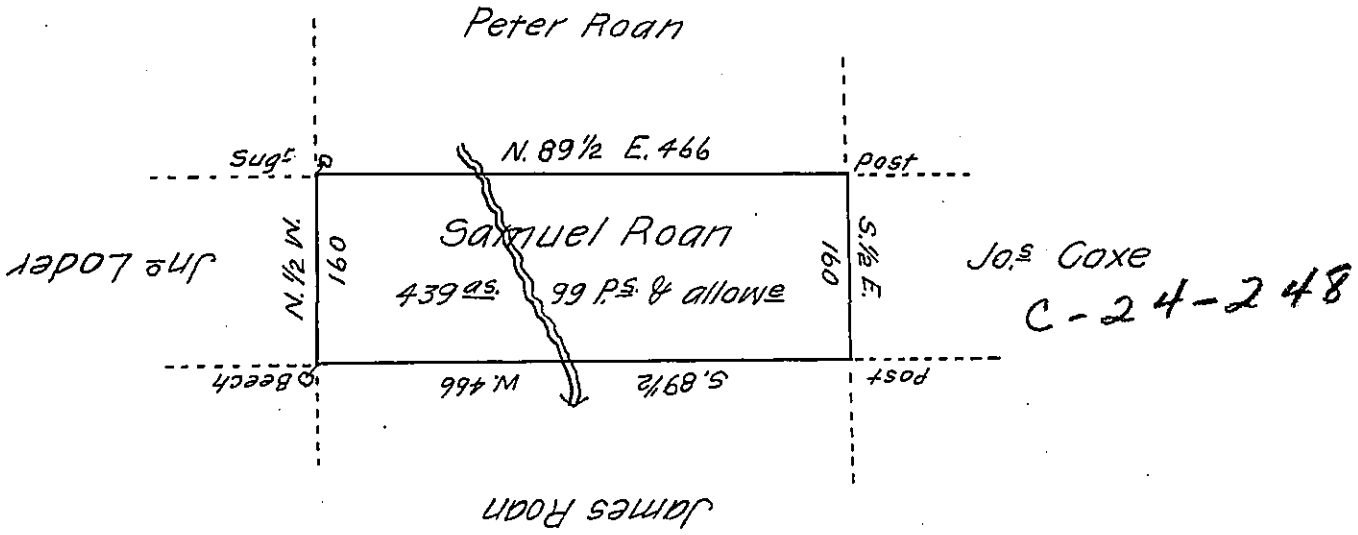


Page - 76



A Draught of a tract of land called— Situate in the County of Luzerne adjoining James Roan & others, surveyed the 29<sup>th</sup> day of Octo<sup>r</sup> 1792 for Sam<sup>l</sup> Roan in pursuance of a Warrant bearing date the 3<sup>d</sup> day of April 1792 Containing Four hundred thirty-nine acres <sup>ninety-nine ps.</sup> & the allowance of Six & Cent &c.

To

Ant<sup>y</sup> Crothers, D. S.

Dan<sup>l</sup> Brodhead, Esq<sup>r</sup> }  
 Surveyor General }

IN TESTIMONY that the above is a copy of the original remaining on file in the Department of Internal Affairs of Pennsylvania, made conformably to an Act of Assembly approved the 16th day of February 1833, I have hereunto set my hand and caused the Seal of said Department to be affixed at Harrisburg, this eighteenth day of July, 1907.

*Henry Howell*

Secretary of Internal Affairs.